

Radiation Oncology CONNECTIONS

NEWS FROM THE UNIVERSITY OF WISCONSIN-MADISON DEPARTMENT OF HUMAN ONCOLOGY

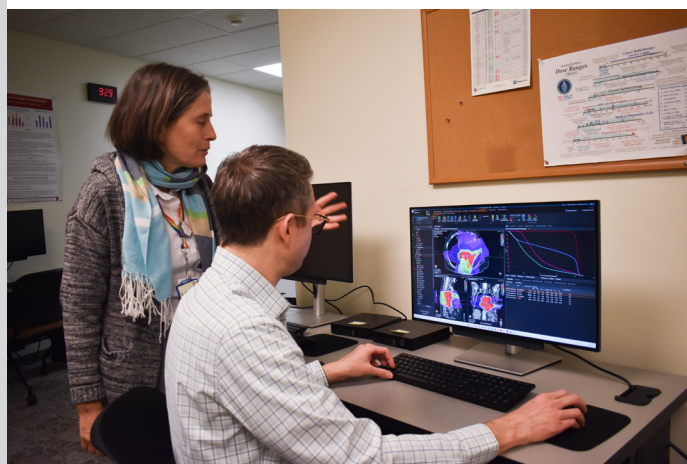
Slagowski-Floberg Team Awarded Grant to Redefine Brachytherapy Implant Procedure

Dr. Jordan Slagowski and **Dr. John Floberg** were selected from a competitive pool of applicants for funding this summer when they were awarded a Wisconsin Prostate SPORE Pilot Grant funded by the National Cancer Institute (NCI). The grant will support a year of research focused on running computational simulations in their lab to improve catheter placement during brachytherapy procedures for prostate cancer patients.

[LEARN MORE](#)



Record-high enrollment in radiation treatment planning course thanks to expanded lab space



Together with the Department of Medical Physics, the Advanced Radiation Treatment Planning course (MP 772) continues to be one of the most popular elective courses for medical physics graduate students. Exciting new hardware and software additions to the State of the ART (START) computer-based treatment planning lab have enabled more students than ever to work independently on the integrated treatment planning lab exercises.

[CONTINUE READING](#)

New Bentson Fellowship Director



Congratulations to **Dr. Pippa Cosper** who was recently named the new Director of the Bentson Translational Research Fellowship. The fellowship supports highly motivated and well-qualified individuals seeking a career in translational cancer research as they navigate the transition from trainee to independent investigator in academic faculty positions.

[ACCEPTING APPLICATIONS NOW](#)

Alpha Omega Alpha Inductee 2025



Dr. Kristin Bradley, Radiation Oncologist, Professor and Department of Human Oncology Associate Chair of Education and Training, was inducted into the Alpha Omega Alpha honor society during a banquet April 8, 2025.

Congratulations on this lifelong honor!

[LEARN MORE](#)

NEW! Meet the Expert Series

Welcome to our **Meet the Expert series**. We will be highlighting one of our outstanding faculty, student or staff members every other month to show the variety of jobs and individuals the Department of Human Oncology employs at our clinics, in our labs, in our classrooms and in our office spaces.

Educating future generations

Dr. Benjamin Durkee, Director of the Proton Therapy Program in the Dept. of Human Oncology, visited a 7th grade classroom at DeForest Area Middle School in late January to discuss proton therapy and radiation oncology. This was part of their *"Healthcare and Human Services"* lecture series.



Rachel Minne
Graduate Student

"It is exciting to be able to come into lab every day with a new question to address, it keeps my day to day engaging and unique."

Meet the Expert Series

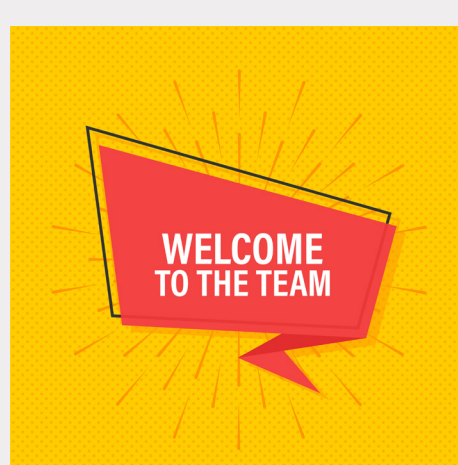


Match Days 2025 - Welcome New Residents!

We are so pleased to welcome our new Radiation Oncology Medical and Physics Residents to the Department of Human Oncology! Our new Residents successfully matched with the University of Wisconsin-Madison programs on Match Days - Friday, March 21, 2025 and Friday, March 28, 2025.

[Radiation Oncology Medical Residents](#)

[Radiation Oncology Physics Residents](#)



Badger Challenge is coming up! Register today.



POWERING RESEARCH. CURING CANCER. That's the driving force behind the Badger Challenge, and this year, we're taking it to a whole new level!

Mark your calendars for Sunday, September 21, 2025, because we're bringing the energy, the excitement, and the determination to a brand-new location: UW Health Eastpark Medical Center, 4621 Eastpark Blvd, Madison!

[LEARN MORE](#)

[REGISTER TODAY](#)

Are you interested in giving to the Department of Human Oncology?

As we strive to develop world class research and clinical programs, your gifts are essential to our success and allow us to explore novel research ideas, develop new methods for diagnosis and treatment and enhance facilities as well as education.

Please contact **Danielle Kamps, Senior Director of Development | Wisconsin Medicine Wisconsin Foundation and Alumni Association** at 608.308.5322 (direct) or [via email](#) for more information on disease site specific donations or general gifts to support clinical, research and educational endeavors.

[MAKE A GIFT TODAY](#)

